



ThermaSeal®

Sectional Thermal Doors



For maximum thermal protection and durability, choose Raynor's energy-efficient ThermaSeal sectional doors. Every ThermaSeal door is built for superior performance perfect for commercial, industrial, agricultural, or loading dock applications.



TM175

This benchmark product provides proven Raynor reliability and durability to meet or exceed the requirements of daily use.



TM200C

The TM200C provides the same great quality and durability you get from all ThermaSeal models, with the added benefit of 14 stylish colors to choose from. .



TM200

This 2" thick model is a great option for energy efficiency in the ThermaSeal line. With all the standard features you expect from a ThermaSeal door, the TM200 is a great fit for a variety of applications demanding performance.



TM220

The choice for durability and thermal efficiency in challenging environments is the ThermaSeal TM220. With a heavy duty 20 gauge exterior, this 2" thick model has all the features you expect and options you need for a wide range of applications.



TM300

The ultimate choice for thermal protection is the ThermaSeal TM300. This 3" thick model is the most energy efficient in the ThermaSeal line.

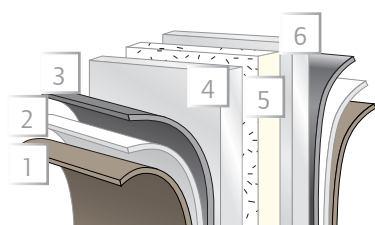


TM320

With the benefits of the TM300, plus a heavy-duty 20 gauge exterior, the TM320 is perfect for meeting job specific requirements without sacrificing the features you expect from a Raynor Sectional Door.

ThermaSeal®

Raynor's exclusive NeuFoam™ insulation process fills 100% of the door's interior space with our proprietary energy-saving polyurethane insulation, to deliver exceptional thermal efficiency. This process also provides superior foam density for excellent structural integrity. Rust-resistant galvanized steel is finished with a two-coat, baked-on paint process for long life. The superior thermal bond between steel and polyurethane Neufoam™ is warranted against delamination for 10 years.



1. baked-on finish
2. epoxy primer
3. galvanized layer
4. high-strength steel
5. polyurethane insulation
6. high-strength steel



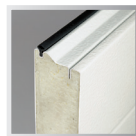
ThermaSeal Interior

Application Guide

	TM320	TM300	TM220	TM200	TM200C	TM175
Agricultural Buildings	●	●	●	●	●	●
Car Wash/Corrosive Environments	●	●	◐	◐	◐	◐
Commercial/Multi-Tenant	●	●	●	●	●	●
Fire Station/Ambulance	●	●	●	●	●	●
High Security	●	●	●	●	●	●
Large Opening Size	●	●	●	●	●	●
Mining, Pulp & Paper	●	●	●	◐	◐	◐
Non-insulated Storage	○	○	○	○	○	○
Service Station	●	●	●	◐	◐	◐
Thermal Environments	●	●	●	●	●	●
Transit Facility/Truck Terminal	●	●	●	●	●	●
Underground Parking	●	●	○	○	○	○
Warehouse/Manufacturing	●	●	●	●	●	●

● Best ◐ Good Solution ○ Applicable

Features



Maximum Thermal Protection

Energy-saving polyurethane foam insulation is used to deliver exceptional thermal efficiency.



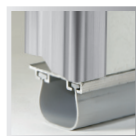
Rugged Hardware and Springs

Your ThermaSeal door comes packaged with the right combination of long-lasting hardware, track and springs to precisely match your door's size and application.



Reduced Airflow

Dual vinyl barriers dramatically reduce air infiltration. A true thermal break prevents heat loss and eliminates any metal-to-metal contact between surfaces.



Decreased Energy Costs

ThermaSeal doors help you reduce energy costs with a U-shaped, vinyl bottom weatherseal and sturdy aluminum retainer.

Model Options* and Upgrades



Choice of Windows

Select either 24" x 8" (shown), 24" x 12", 34" x 16" or full-view window sections. Choose from a variety of styles to suit any application, including: insulated glass, acrylic, tempered and polycarbonate with thicknesses ranging from 1/8" to 1/2".



Customized Track and Hardware Systems

Track systems are supplied to fit special clearances, inclines or contour applications. Hardware and track systems can be designed to fit any need.* A QuikClip™ pre-assembled track option is also available. Additional trussing is available for special wind loading applications.



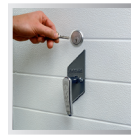
IECC Requirements Package

The International Energy Conservation Code (IECC) requires building components to meet minimum U-factor and Air Infiltration rates. This option will ensure the TM320, TM300, TM200, TM220 and TM175 will exceed the latest IECC standards by using the required header and jamb seals and track mounting. Windows, exhaust ports and pass doors cannot be used. Raynor's IECC package yields the following results.



High-Cycle Counterbalance Systems

For reliable operation in high-traffic areas, choose high-cycle torsion springs with 25,000, 50,000 or 100,000-cycle life.* For reduced maintenance and ultra-smooth operation in heavy-use applications, choose a weight counterbalance system.



Locks

In applications where control and access are important, choose from a variety of locking options to help keep your building secure. Locks come in both inside and outside variations.



Carbon Monoxide Vent

Allows you to channel fumes to the outside when the door is closed. Available in a variety of sizes.



Swing-Up Center Posts

Swing-up options are available for extra-wide openings. Ideal for agricultural or airplane hangar applications.



Pass Door

Pass doors conserve energy by allowing entry door access without the full operation of the garage door and minimize wear and tear by conserving cycle life.

*Some options may be limited to door size or model.



QuickDock™ Solution

A QuickDock option is available on the TM200, offering preassembled, palletized sections for safer, faster and easier installation on orders of 36 doors or more.

Series Model	Section Thickness	Tested U-Factor	Calculated R-Value	Air Infiltration @25mph	Exterior/Interior Steel Thickness	Max. Opening Width [†]	Max. Opening Height	Colors
ThermoSeal TM175	1 1/4"	0.21	16.4	0.22 cfm/ft ²	25 gauge / 26 gauge	36'-0"	24'-0"	White, Brown, ColorWave™
ThermoSeal TM200C	2"	0.17	18.0	N/A	26 gauge / 27 gauge	36'-0"	24'-0"	Almond, Ivory, Frost White, Desert Tan, Sandstone, Beige, Bronze, Brown, Sepia, Battleship Gray, Iron Ore, Slate
						20'-0"		Black, Charcoal
ThermoSeal TM200	2"	0.21	18.3	0.12 cfm/ft ²	26 gauge / 26 gauge	36'-0"	24'-0"	White, ColorWave™
ThermoSeal TM220	2"	0.21	18.3	0.12 cfm/ft ²	20 gauge / 26 gauge	36'-0"	24'-0"	White, ColorWave™
ThermoSeal TM300	3"	0.19	24.54	0.19 cfm/ft ²	25 gauge / 26 gauge	40'-0"	24'-0"	White, Brown, Frost White, Beige, Sepia, ColorWave™
ThermoSeal TM320	3"	0.19	24.54	0.19 cfm/ft ²	20 gauge/26 gauge	40'-0"	24'-0"	White, ColorWave™

Construction: Steel Sandwich

Surface Texture: Stucco (Pencil Groove)

Thermal Break: Available on all models

Insulation: NeuFoam™ Polyurethane

Section Limited Warranty*: 10 years (Rust-through & delamination)

Optional Post Paint Finish:** Raynor's ColorWave™ features Sherwin-Williams® next generation post paint system for your garage door. With 1,500 colors to choose from, home and business owners can couple this elite paint system with state of the art Raynor manufacturing to craft the perfect look for their home or project.

***Limited Warranty** See your local Raynor Dealer for complete details.

**Not all colors are available in solar reflective paint, colors that are not available as solar reflective cannot be used on polyurethane doors.

†Maximum door width and height may have limitations based on door weight, track configuration and springing. Not all sizes of door are available with all options.

Commercial Operators



ControlHoist

Commercial Operators

Raynor ControlHoist™ (with solid state logic board control) operators are available in a variety of motor, voltage, and phase combinations for any commercial or industrial application. Contact your local Raynor Authorized Dealer to select the operator and accessories that are suited for your door's size and usage.



Control Options

A variety of control stations, photoelectric eyes and remote activation devices are available.

Dependable. Stylish. Timeless.

Raynor also offers a full line of sectional, rolling, high performance and traffic doors as well as security grilles. See your Raynor Dealer or visit www.raynor.com for more information.



DuraShutter



RapidCoil, RC300



DASMA TPV Program

The DASMA Thermal Performance Verification (TPV) Program is a voluntary program to certify and verify the thermal performance ratings of sectional door products using third-party testing and inspection. The U-Factor on this model is verified through the DASMA TPV Program.

Professional Installation and Service

Depend on your Raynor Dealer

When you select Raynor, you're not just getting a superior garage door - you're also getting professional garage door installation and service expertise.

Every Raynor garage door is installed by a trained Raynor professional, and that means added benefits for you. First, you won't have to deal with it yourself. Second, because it's done right the first time, your door will deliver performance and reliability from the day it's installed. Your technician will check your door for everything from safety to performance and appearance. Trust your Raynor garage door to someone who knows it better than anyone else, your professional Raynor Dealer.

Follow Us



P.O. Box 448, 1101 East River Rd.
Dixon, IL 61021-0448
1-800-4-RAYNOR (472-9667)

Exclusively Distributed by: